

Gateway 500 Lite (MOST)

General Installation Guide

GWL-9202-4



1. Introduction

Gateway 500 Lite enables music playback from a USB storage or iPod through your vehicle's entertainment system, using the buttons of the car stereo for basic control. This device is designed to give easy to manage control in MOST based cars where it is not possible to display text. Please note: It may be necessary to programming the car by your dealer in order to use the Gateway 500 Lite according the following:

BMW non iDrive-4

If original CD changer fitted no programming is required. If original CD changer not fitted install GWL and retrofit "IPOD" option with service computer. In case of E65 (before 03/2005) retrofit CDC option.

Mercedes

Generally no programming is required but in some cases (e.g. no device was connected onto the optical ring) it is needed to enable a CD changer with the service computer.

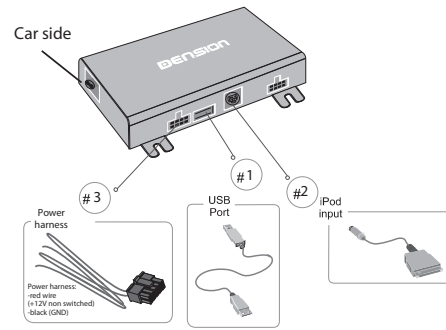
Porsche

Generally it is necessary to enable a CD changer with the service computer.

Saab 9-3

It is necessary to enable a CD changer with the service computer using an original CD changer. (the CD changer is only necessary during the installation process).

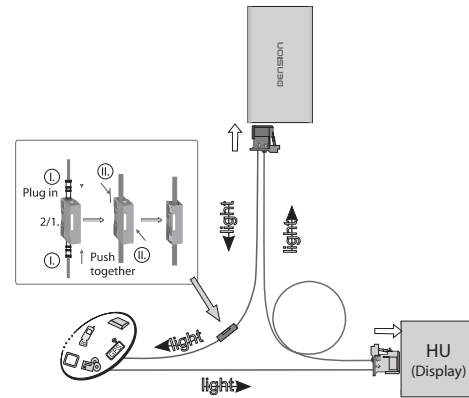
2. Connections



3. Installation

Type A

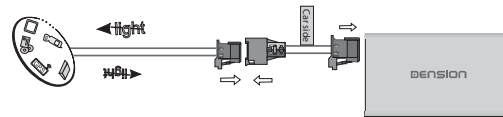
If you are connecting Gateway 500 Lite to the back of the head unit, use this method:



Please note: CD changer retention is not supported, therefore you need to disconnect it from the optical ring if present and loop the optical ring with the separate loop kit (FOA1TL1).

Type B

If you are connecting Gateway 500 Lite to the back of the head unit, use this method:



4. Car configuration

Before connecting the Gateway 500 Lite (GWL) device to the MOST ring, it requires a car configuration procedure. The default car setting of the GWL is Mercedes. Depending on the car type it requires a different car configuration file.

To configure the Gateway 500 Lite to your car, please follow the next steps:

1. Copy the appropriate GW_CFG.BIN file to the root of a USB flash drive
2. Connect the flash drive to the GWL MOST when it is not powered
3. Please connect the power cable to the GWL MOST
4. The GWL will start booting. In the meantime the configuration procedure will start automatically. Wait about 1 minute
5. Connect the GWL to the MOST ring
6. Turn the ignition & Head Unit ON and test the GWL functionalities
7. Finish the installation of the Gateway 500 Lite

The car configuration files can be downloaded from the download section (configuration files) of the Dension website: www.dension.com

5. Test and refit

Before you refit the head unit, test the Gateway with your car audio making sure all connections are correct and that you have full functionality.

Note: If during testing you notice any changes or inconsistencies in the way the car's electrical system operates, disconnect the Gateway product immediately and consult your dealer. When you have tested everything, refit your head unit. Do not trap the cables, or leave them in a position where they may become trapped after refitting the head unit. We supply cable ties to mount the Gateway module. Please mount the module away from heat or damp surfaces. Refit is the reversal of the removal process for your specific vehicle, as per your manufacturer's instructions.

6. Disclaimer

If your car's electrical system begins to behave in an unpredictable way please immediately disconnect the Gateway device physically and have it checked by your installer or an automotive electronics professional. Dension and its authorized distributors and retailers are not liable for any incidental consequential or indirect damages or loss and do not assume liability for any diagnostic fees.

The use of handheld devices while driving may be subject to government legislation. Please ensure that your use of the Dension device complies with applicable traffic laws. Dension does not assume liability for any events resulting from the illegal or irresponsible use of handheld devices during the driving. Dension reserves the right to modify its products or specifications without prior notice.

7. Warranty

Dension devices carry a one-year limited warranty that protects you from defects in material and workmanship of products sold by Dension or its authorized distributors and retailers. Dension does not warrant any installation work or assume liability for any damage caused due to negligence, improper installation or operation. For warranty claims, proof of purchase is required.

8. Update and support

If you need further assistance in using your Gateway, please contact your local supplier or visit www.dension.com. Please check the product section for the latest firmware version and product documentation of your device.