



## iGateway iPod, AUX



### Install Guide

v.1.0

GW1-9201-2

#### 1. INTRODUCTION

iGateway lets you connect your iPod / iPhone to your original car radio, providing music playback and menu based control and charging.

#### 2. GETTING STARTED

**At first please make sure that the vehicle compatibility is correct.**

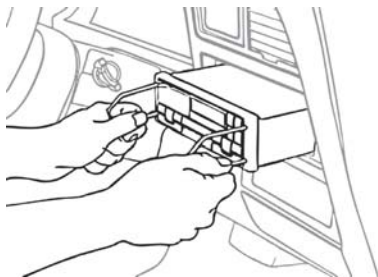
The Dension iGateway is available in specific versions for different vehicle types, therefore the exact operation and installation may be different in each case.

##### Warning!

**During the installation always make sure that the ignition key is removed from the car, the radio is switched off and that you have the security code of the head unit (radio) available (if applicable).**

#### 3. HOW TO REMOVE THE HEAD UNIT

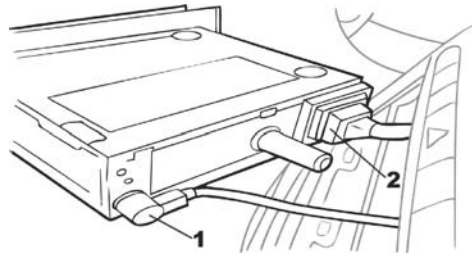
First, carefully remove your vehicle's existing factory fit head unit as per the factory instructions and using the correct tools.



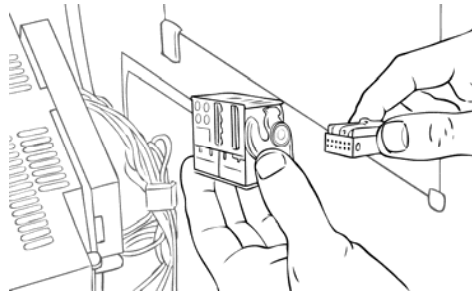
In some cases, removing the head unit will require panel removal as well therefore we recommend to contact your vehicle's dealer or installation supplier / installer for more information.

#### 3. FITTING THE GATEWAY HARNESS

Once the head unit has been removed, disconnect the antenna cable (1) and then unclip the main wiring connector from the head unit (2). This will differ in all makes and manufacturers.



With the main radio cable removed, first connect the Dension supplied cable to the original factory cable harness.



In some cases there may be an add-in connector. Remove the CD changer section and replace with the loom supplied with the iGateway. For further details please go to **section 6**.

##### Important installation notes for BMW owners:

If the car has factory CD-Changer (CDC) in that case **all wires needs to be disconnected** from the factory CDC (except if you install CD Retention Kit), otherwise you may experience some stability issues.

##### Important installation notes for Audi and BMW owners:

The **free black lead** on the Gateway harness **must be grounded / connected** to the **chassis of the radio**. In case of BMW you don't need to connect this lead.

#### 4. CONNECTION

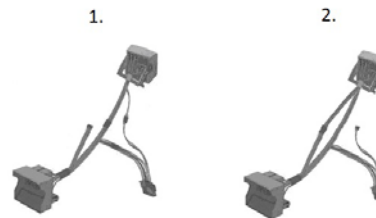
The below diagram depicts how the different modules connect to the iGateway.



Connect the **round iPod connector** and **AUX** (optional) to the module and feed them through the dashboard to an appropriate location.

##### Please note:

If you have a factory phone kit installed in your radio **please position the 4 pin molex** connector to the position shown on **fig. #2**, so that the phone audio could come through the car speakers. Skipping this step will cause the loss of phone kit volume.



**Warning! Do not trap the cables, or leave them in a position where they may become trapped after refitting the head unit.**

Ensure the device is correctly fitted before running the cable. Then, reconnect the Dension supplied main radio connector to the rear of the head unit.

Connect the **18 way micro-fit** (18 pin molex) to the Car side of the iGateway module.

#### 5. TEST AND REFIT

Before you refit the head unit, test the iGateway with your car audio, making sure all connections are correct and that you have full functionality.

**Note: If during testing you notice any changes or inconsistencies in the way the car's electrical system operates, disconnect the Gateway product immediately and consult your dealer.**

##### Important installation notes for BMW (17 pin, round pin) owners:

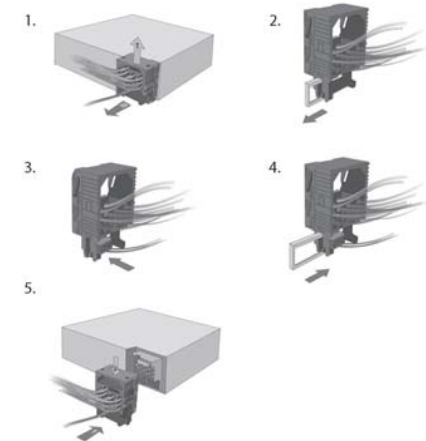
The white ISO connector can be connected in two ways. If you have full functionality without sound that means this connector has been connected in wrong way. Please rotate that connector by **180 degrees**.

When you have tested everything, refit your head unit. Take care **not to trap any wires** or the **Dension product**. We supply cable ties to mount the Gateway Five module. **Please mount the module away from heat or damp surfaces.**

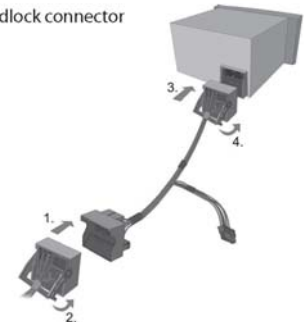
Refit of the Head Unit is the reversal of the removal process for your specific vehicle, as per your manufacturer's instructions.

#### 6. CAR-SPECIFIC CONNECTIONS

##### BMW's with 17-pin connector



##### Cars with quadlock connector (break-in):



#### 7. DISCLAIMER

*All photos / illustrations are for representation purposes only and may differ visually from the equipment in your vehicle. Information correct at time of going to print E. & O. E. Dension Audio Systems Ltd. and its registered partners cannot be held liable for any damages caused by the incorrect installation of any Dension product.*

#### 8. FURTHER ASSISTANCE

If you need further assistance in using your Dension product, please contact your local supplier or visit [www.dension.com/en/support](http://www.dension.com/en/support) and click on 'Support'.

Please check also the download section for the latest firmware version and product documentation, as these may provide additional features or easier use of the product.